



MONTHLY MEMBERSHIP PROGRESS REPORT

District 323 F1

Results as of: 1/31/2015

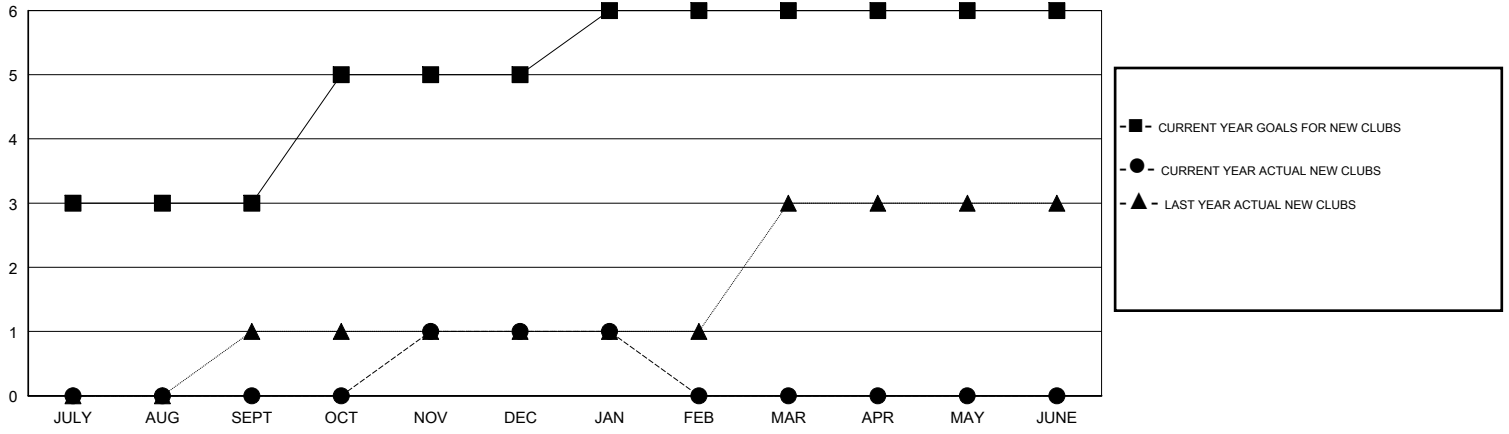
GMT: KAMLESH JAIN

LOCATION INDIA

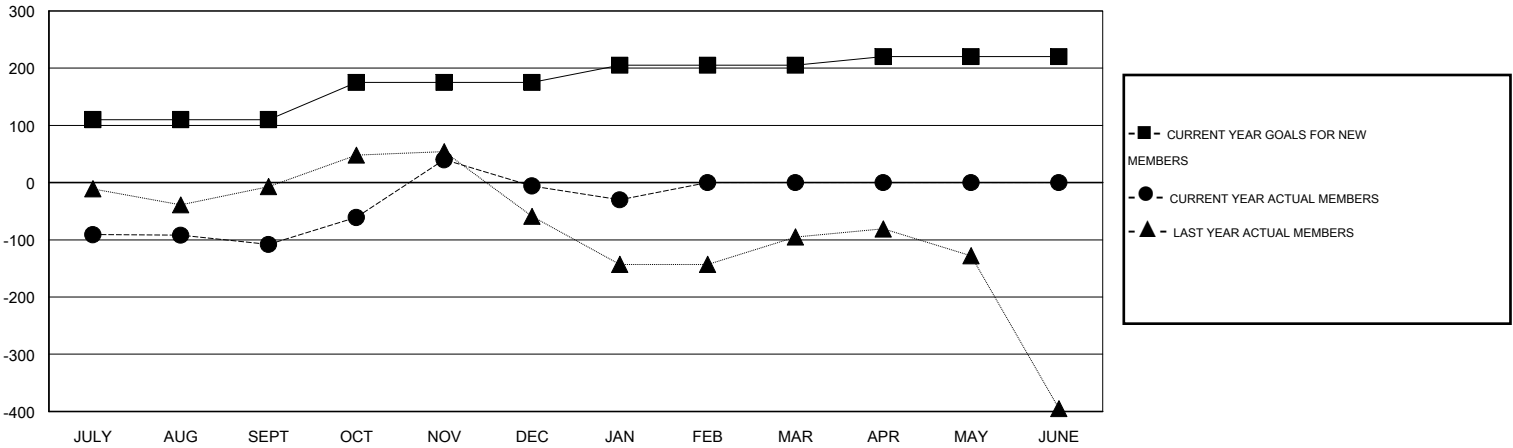
GMT CA 6

Clubs					Members				
RESULTS FOR 2014-2015					RESULTS FOR 2014-2015				
QUARTER	NEW CLUB GOAL	NEW CLUBS	DROPPED CLUBS	NET GAIN/LOSS	QUARTER	NEW MEMBER GOAL	CHARTER AND NEW MEMBERS ADDED	DROPPED MEMBERS	NET GAIN/LOSS
JULY/AUG/SEPT	3	0	1	-1	JULY/AUG/SEPT	110	33	141	-108
OCT/NOV/DEC	2	1	2	-1	OCT/NOV/DEC	65	164	62	102
JAN/FEB/MAR	1	0	0	0	JAN/FEB/MAR	30	23	47	-24
APR/MAY/JUNE	0	0	0	0	APR/MAY/JUNE	15	0	0	0

GOALS AND ACTUAL NEW CLUBS CUMULATIVE



GOALS AND ACTUAL MEMBERS CUMULATIVE



DROPPED CLUBS: 3	30 CLUBS OF 72 ADDED 1 OR MORE NEW MEMBERS	<u>GENDER DISTRIBUTION</u>	
		MALE	1,724 (76.90%)
<u>DROPPED MEMBERS</u>		FEMALE	518 (23.10%)
DECEASED	7	CLICK HERE FOR HEALTH ASSESSMENT DATA	
CLUB CANCELLED	36		
OTHER	207		
TOTAL	250	FAMILY UNIT MEMBERS	718
		HEAD OF HOUSEHOLD	336
		NON-HEAD OF HOUSEHOLD	382